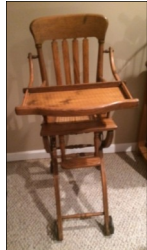


# ANTIQUUE AUCTION



**Friday , May 29 , 2015 at 10:00 a.m.**

**ANTIQUES \* COLLECTIBLES \* PRIMITIVES:** 50's Era Metal Dentist Cabinet\* Early Kitchen Step Cabinet\* Ice Cream Chairs\* Early Childs Bassinette\* Library Table \* Vintage Willow Bench\* Dry Sink\* Wooden File Cabinet\* Wardrobe\* Marble Top Dresser \* Hutch \* Hoosier Style Cabinet \* Highchairs \* Drop Leaf Table \* Wooden Rockers \* School Style Clock \* Kitchen Tables \* Child's School Desks \* Trunks \* 10' Table w/ Drawers \* Church Pew \* Kitchen Scales \* Teacher Desks \* Oak Swivel Desk Chair \* 1800's Milk Can Sled\* Various Old Pillars\* Steamer Trunk\* Watering Can\* Various Old Wood Frame Windows\* Wooden Wagon Seat\* Croquet Set\* Steel Milk Cans\* Wooden Beer Box\* Vintage Lunch Pail\* Kitchen Utensils \* Cookie Cutters \* Rolling Pins \* Graters \* Meat Grinders \* Porcelain Enamelware \* Canning Jars \* Bottles \* Wire Egg Baskets \* Cream Can \* Wooden Wagon Wheels\* Vintage Transit Level\* Dressing Screen\* Accordion\* Vintage Girls Tank Bicycle\* Two Person Huffy Bicycle\* Two Man Crosscut Saws\* Older Childs School Desks\* Commode\* Glass Insulators\* Vintage Fence Stretcher in Original Box\* Ceramic Molds\* AND SO MUCH MORE



## TRACTOR & OUTDOOR ITEMS



International 574 gas, with Kelley Loader, sync shift s/n (231004IU006158) \* **Equipment:** 3 pt Hook Long Backhoe Attachment\* 3 pt Hook Cement Mixer\* 3 pt Hook 100 Gallon Sprayer\* Renken 20' Ski Boat with 120 Hp I/O Drive on Trailer\* 2005 Futra Coachmen Pop Up Hard Top, Sleeps 10 \* Two Yamaha 340 Snowmobiles\* Two Yamaha 250 Snowmobiles\* Snowmobile Sled\* 1984 Ford XLT Pickup Ext Cab\* Steel Deck Hay Wagon\* 25' Gas Powered Grain Auger 6" Diameter\* Firewood Cart\* Hewed Barn Beams and Old Barn Lumber\* Playground Rubber\*

## Tools

1 Pair of Aluminum 20' Pump Jacks\* 30' Aluminum Walk Board\* Various Ladders\* Gas Powered Lawn/Vegetable Sprayer\* Platform Scale\* Bench with Vise\* Dayton Ceiling Gas Shop Heater\* Scissor Jack off Dump Truck\* Cherry & Maple Flooring\* House Trim and Moldings\* Oxygen Acetylene Torch \*

### Big Bear Auctions, LLC

*Jerry & Aimee Glassman*

269-461-6686

*Sale Manager: Willie Lehman*

574-825-5507

*BigBearAuctionCompany.com*

AU1090010 @ AU19400040

**SCHAFFER HOMESTEAD FARM**

**64154 MIAMI RD**

**BREMEN IN 46506**

**DIRECTIONS: FROM HWY 20 TAKE 331 SOUTH 5 MILES TO NEW RD THEN WEST 2 MILES TO MIAMI THEN SOUTH TO SALE SITE, OR EAST OF HWY 31 ON NEW RD TO MIAMI**



Terms: Cash, Check, or Credit Card with proper ID. Not responsible for accidents or goods after sold. Announcements made day of auction supercede any printed material. Items sold "as-is" condition.